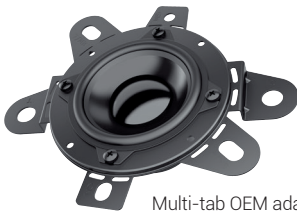


Prima

AP 2 MV

Wide-range component multi vehicle
50 W



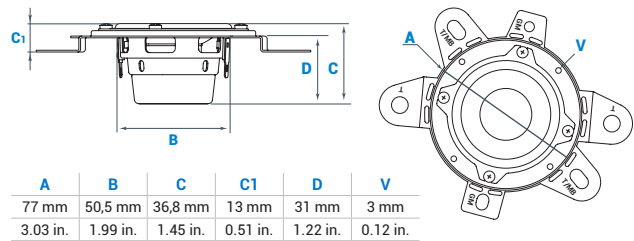
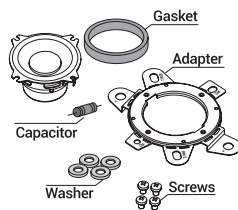
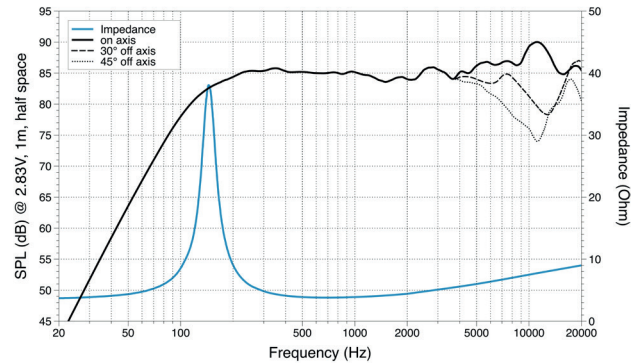
Multi-tab OEM adapter



TECHNICAL SPECIFICATIONS		
Component		Wide range
Midrange size	mm (in.)	50 (2)
Power Handling	W peak	50
	W continuous	25
Impedance	Ω	4
Frequency Response	Hz	150 ÷ 20k Hz
Magnet size D x d x h	mm	24,9 x 5
	(in.)	(0.98 x 0.2)
Weight of one component	kg (lb.)	0,15 (0.33)
Wide range Voice Coil Ø	mm (in.)	25 (1)

- 1 Ultra-wide frequency response ranging from 150 Hz to 20 kHz allowing the entire virtual stage to be concentrated on the top side of the dashboard.
- 2 25 mm (1 in.) CCAW double layer coil for excellent power handling and low frequency extension.
- 3 Powerful magnetic assembly made of a symmetrical double Neodymium magnet for optimal excursion control.
- 4 Aluminium cone and copper shorting ring for a high frequency response up to 20 kHz.
- 5 Ultra-compact design, thanks to the specifically designed basket and neodymium motor, to facilitate dashboard and A-pillar OEM installations.
- 6 Provided adapter for direct OEM replacement in many General Motors*, Toyota* and Mercedes* vehicles.

ELECTRO-ACOUSTIC PARAMETERS		
D	mm	49,1
Xmax	mm	2,5
Re	Ω	3,5
Fs	Hz	145
Le	mH	0,07
Vas	l	0,36
Mms	g	1,68
Cms	mm/N	0,70
BL	T·m	2,8
Qts		0,64
Qes		0,70
Qms		7,7
Spl	dB	84



*General Motors is a trademarks of GM, Toyota is a trademarks of Toyota Motor Company, Mercedes is a trademarks of Daimler AG.



Elettromedia
62018 Potenza Picena (MC) Italy
T +39 0733 870 870 - F +39 0733 870 880
elettromedia.com



All specifications subject to change without notice_20.A